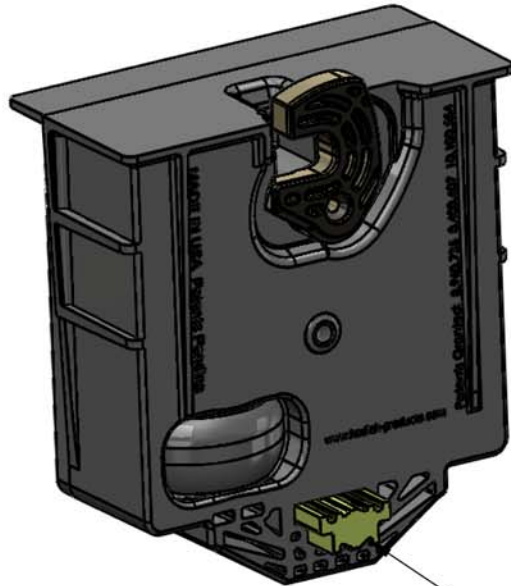
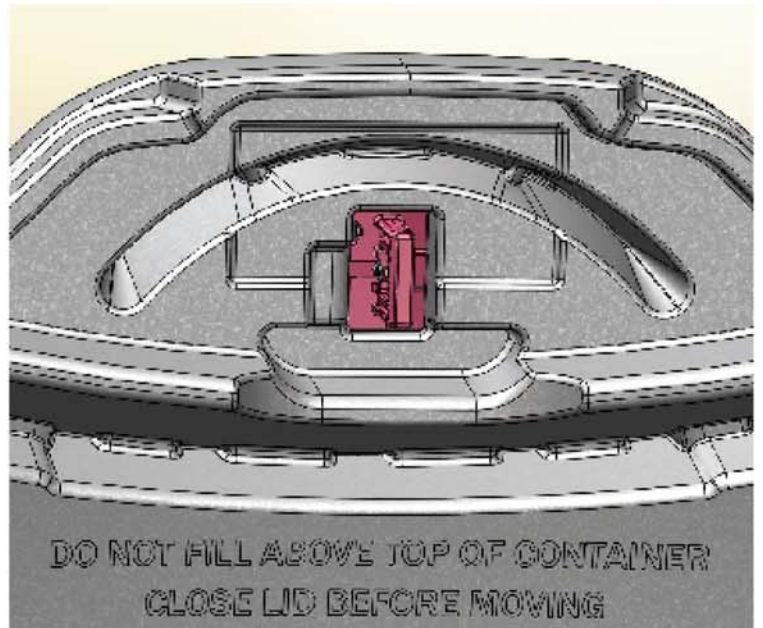
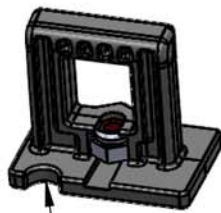


# Instructions for included parts with new latch for Bearicuda® carts.



Replacement latches for Stealth 2 containers manufactured before 2019 will include an updated strike and open knob. The new strike is to be installed with the notch to the front of the container as shown above. (Strike is red for clarity)



The new latch will have a yellow retainer.

The notch in the updated strike mates with a rib in containers manufactured from 2019 onward.



New knob with straight post and no flange. Replace the existing knob with the updated knob.



Discard old knob with a flange on the post.