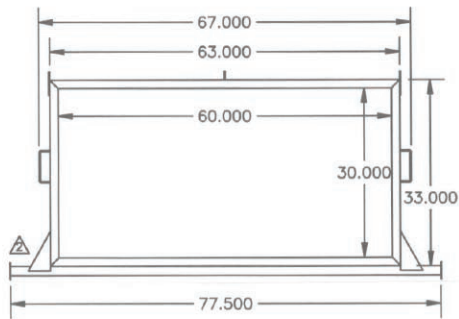


Please goto <http://www.autodwg.com> to register the program, the note will be removed.



NOTES: UNLESS OTHERWISE SPECIFIED

1. 14 GA HRS BODY  
[W/OPTIONAL 1" DRAIN HOLE @ RIGHT SIDE]
2. 10 GA HRS CORNER POSTS AND BRACES
3. 1" X 3" X 14 GA HRS FRONT STIFFENER
4. 1-1/2" x 2-1/2" x 14 GA. HRS RECT TUBE TRIM
5. 1-1/4" SCH 40 BLACK PIPE DUMP BAR
6. 1/2"  $\phi$  HRS ROUND BAR HINGE-PIN[NOT SHOWN FOR CLARITY]
7. PRE-MOLDED PVC LIDS][NOT SHOWN FOR CLARITY]
8. POWDER COAT PER CUSTOMER SPECIFICATIONS
9. WEIGHT SPECIFICATIONS FOR UNIT EXCLUDING OPTIONS,  
MOULDED PVC LID & HARDWARE TOTALS= 299.7 LBS.  
TOTAL WITH METAL LID ADD = 40.7 LBS.  
TOTAL WITH FLIP UP LOCKBAR OPTION ADD = 7.6 LBS.

